



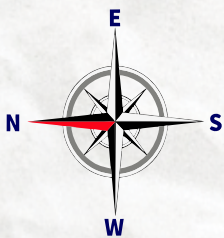
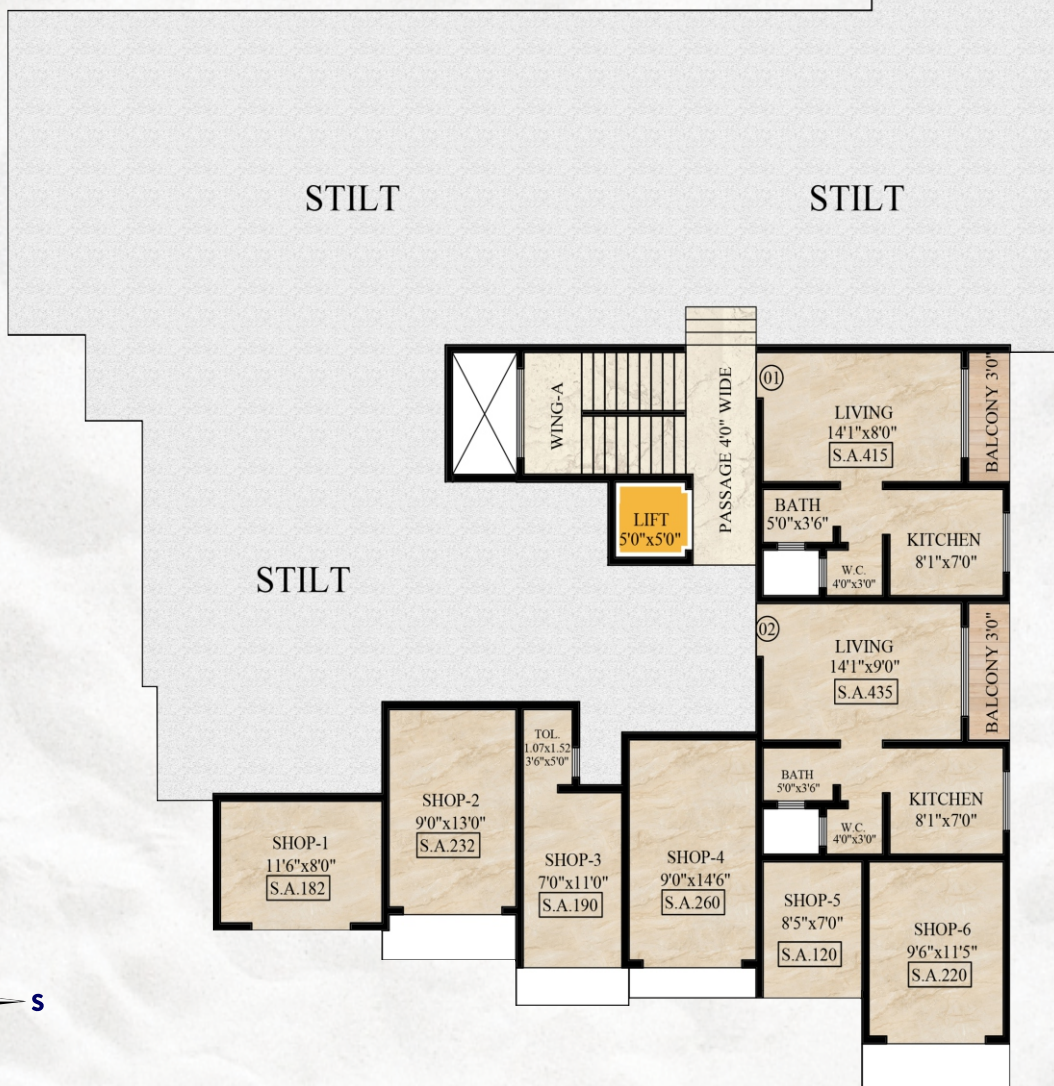
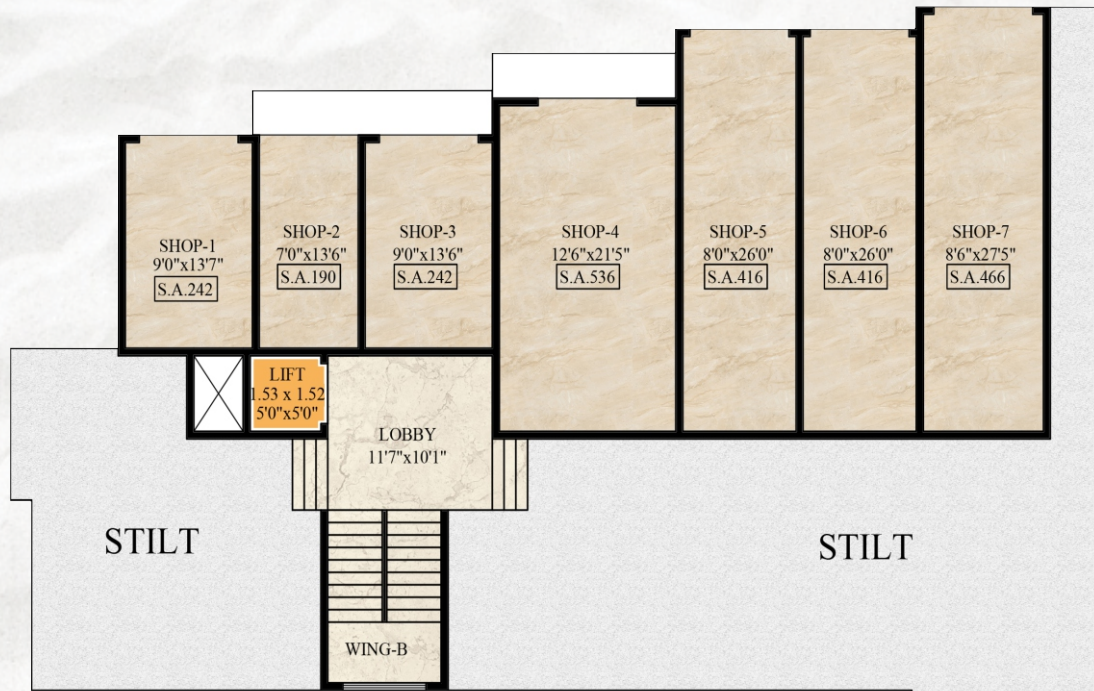
GAUTAM RESIDENCY



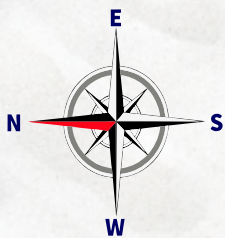
Compact & Exclusive 1 RK & 1 BHK Apartments

Where Dreams Come Home

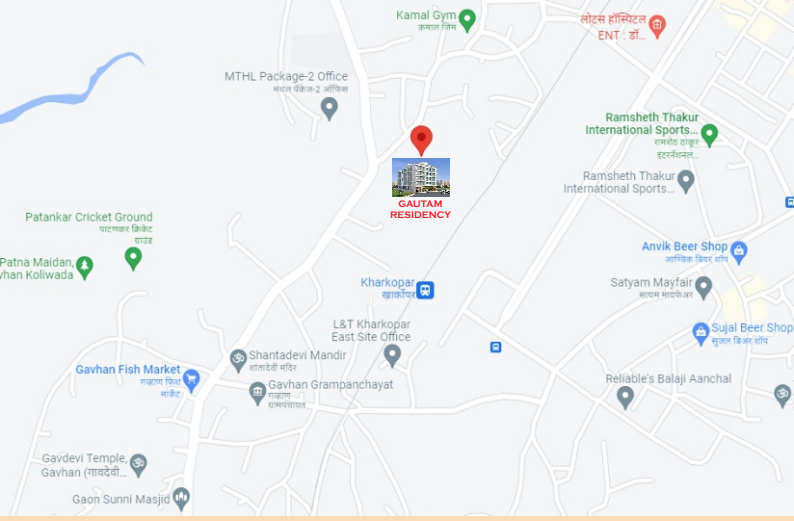
This brochure is purely conceptual and not a legal offering. The Promoter / Architects reserve the right to add / delete / alter any detail / specification / elevation maintained herein
The brochure is indicative of how the furniture can be arranged in the flat No furniture of any nature is to be supplied to the flat purchaser by the developer.



GROUND FLOOR PLAN



TYPICAL FLOOR PLAN (1ST TO 4TH)



LOCATION ADVANTAGES

- 2 Minutes Walking Distance From Kharkopar Railway Station.
- Close Proximity To Mumbai Trans Harbour Link
- 10 Minutes Drive To Navi Mumbai International Airport
- School And College In Near Vicinity
- Market And Shopping Area In Near Vicinity



Railway



School

PROJECT FEATURES

- Total project will be framed by R.C.C.
- Concrete flooring for stilt portion and good quality paver blocks in compound area.
- Reputed company lifts.



Highway



Restaurant

DOORS

- Main door with decorative skin with Wood Frame and peep-hole, latch etc.
- All doors frame on the wall Shall be wooden frame
- Bedroom doors shall be wood lamination.
- Bathroom doors shall be FRP / powder Coated sheet .
- All door fittings will be of Reputed Company.

WINDOWS

- Anodized / Powder Coated aluminium sliding windows With Mosquito Mesh.
- Concealed plumbing with deluxe quality fittings.
- Hot and Cold water mixture in shower and taps.
- Designer wash basin
- Internal concealed plumbing and external water supply of PVC composite pipes.

ELECTRIC

- Concealed copper wiring with ELCB and M.C.B protection multi strand I.S.I marked copper will be used.
- Modular switches, plug points of Anchor, Roma or equivalent make.
- Provision For Water Purification in Kitchen.
- T.V. antenna connection in living room and both bedrooms.

TILLING

- Flooring 2"x 2" Marbonite tiles with 3"skirting of same Marbonite tiles.
- Full tiles on wall of kitchen and bathrooms up to bim level.

KITCHEN

- "L" shape kitchen platform with granite top and Nirali S.S Sink.

GAUTAM RESIDENCY

Project by : **GROUNDTECH INFRA PVT.LTD**

Site Add.: Assessment No.1135/B(Old Survey No.238/4, Village : Gavhan, Tal - Panvel,Dist-Raigad)

OFFICE ADD : M-31, 1st Floor, Dana Bandar, APMC Market -II, Phase-II, Vashi, Sector.19, Vashi, Navi Mumbai- 400 703

BOOKING CONTACT : 8007 584 999