



**VEER
SIDHANAK**



Explore Life, Live Your Imagination!



VEER
SIDDHANAK
Project by
OMSAL

VEER
SIDDHANAK
Project by
OMSAL

pentakoovs ITSI Alwad FanyMax

pentakoovs ITSI Alwad FanyMax



**VEER
SIDHANAK**



*A Creation That Elevates Your
Living Experiences!*

With a serene ambience, lavish luxury and ample amenities, Veer Sidhanak stands tall in the heart of Kurla. Overwhelming with endless pleasures and comforts, it invites you to explore happiness, luxury and indulgence, in your life.

We present a state-of-the-art fully equipped Gymnasium, cum Clubhouse and Podiums to keep you enthused with ecstatic activities. A wide range of retail, dining and entertainment options further enhance the swank & impressive lifestyle.



G+17 Storey Tower



Exclusive 1 & 2 Bhk Flats



A life blessed with Excellent Connectivity!

Veer Sidhanak is located at Shiv Shrishti in Nehru Nagar, Kurla (East), which is one of Mumbai's fastest-developing hubs. This ideal location is the center of all the conveniences, making your travel easy and comfortable.

With a host of multi-connectivity options, that connect Kurla to BKC, the rest of Mumbai and its suburbs, there is little wonder that Kurla has peaked as one of the most coveted and sought-after addresses recently. The best of Business Hubs, Educational Institutes, Shopping destinations and Entertainment options in close proximity make Veer Sidhanak a great choice for your bright future.



*Adjacent to Eastern
Express Highway*



*3 kms. to BKC via
BKC connector flyover*



*Near to Major
Business Hubs*



*Close to Shopping Malls
and Multiplexes*



*Educational Institutes
in the Vicinity*



*Metro-rail Access at
Chembur & Ghatkopar*



*3 Minutes Distance to Kurla
& Jilaknagar Stations*



*Close to Domestic &
International Airports*



*Enriched Living,
Live Life at its Fullest!*

At Veer Sidhanak, you will find a well-equipped Gymnasium where you can maintain your fitness and chisel your body at your convenient hours, all under the guidance of a dedicated fitness instructor. Also the electrifying Clubhouse is packed with plenty of entertainment options where you can explore your talent and enjoy every minute of your life.





Clubhouse



Gymnasium





Precise Planning And Perfect Execution!

General Features

State-of-the-art RCC structure
Chequered Tiles in entire ground with Decorative compound wall
Designer Entrance Lobby

Security

24X7 Security | Secured Gated Community

Flat Features

Vitrified tile flooring in the entire apartment
Internal wall Gypsum finish with acrylic emulsion
Anodized aluminium sliding windows

Kitchen

Granite kitchen platform with S.S. Sink
Additional service platform | Full height tiles above the platform
R.O. Water Purifier

Bathrooms

Designer bathroom with anti-skid floor tiles & full height ceramic tiles
Hot & Cold water mixer for shower
Jaguar made or equivalent C.P. Fittings & sanitary wares

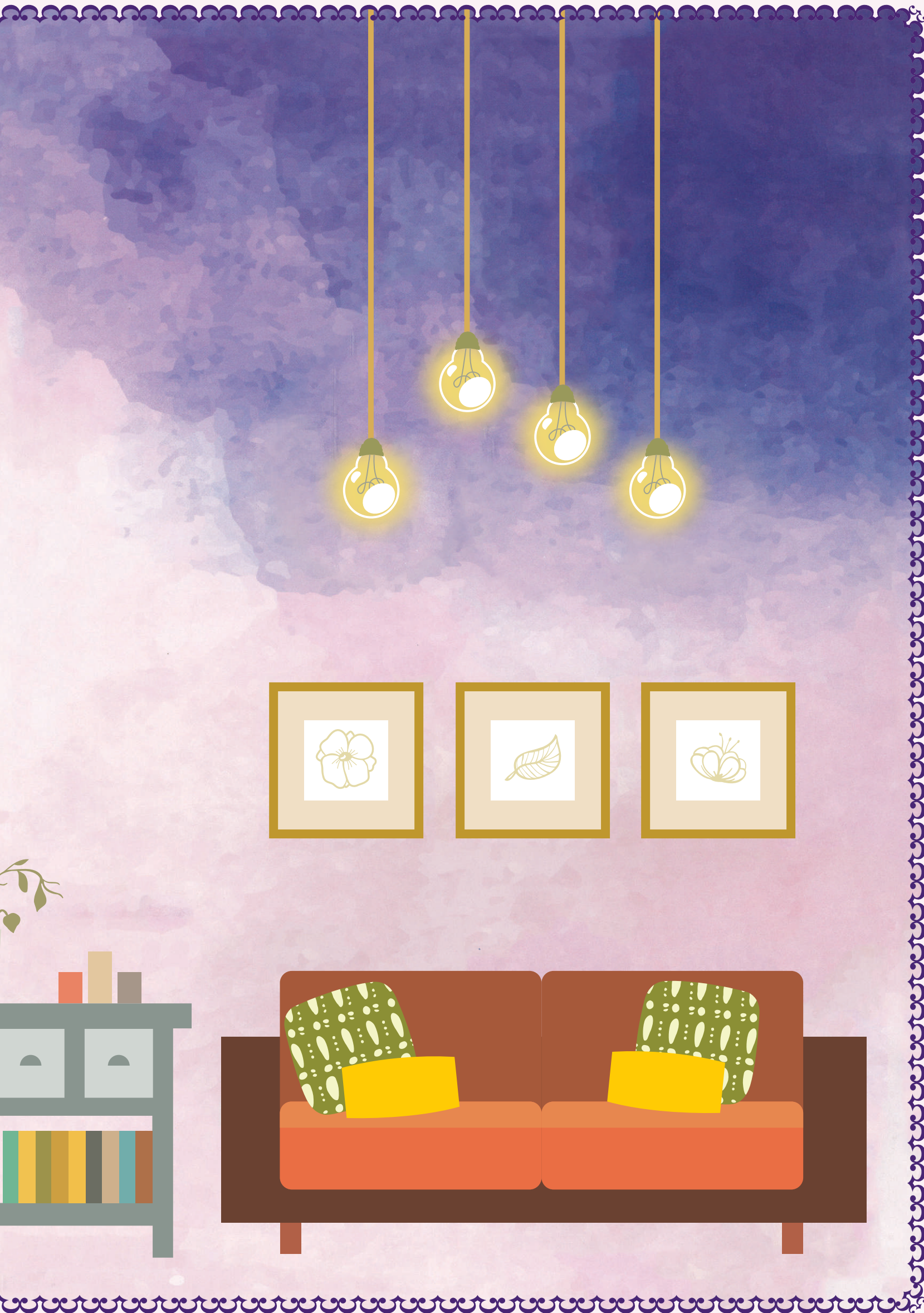
Electrical

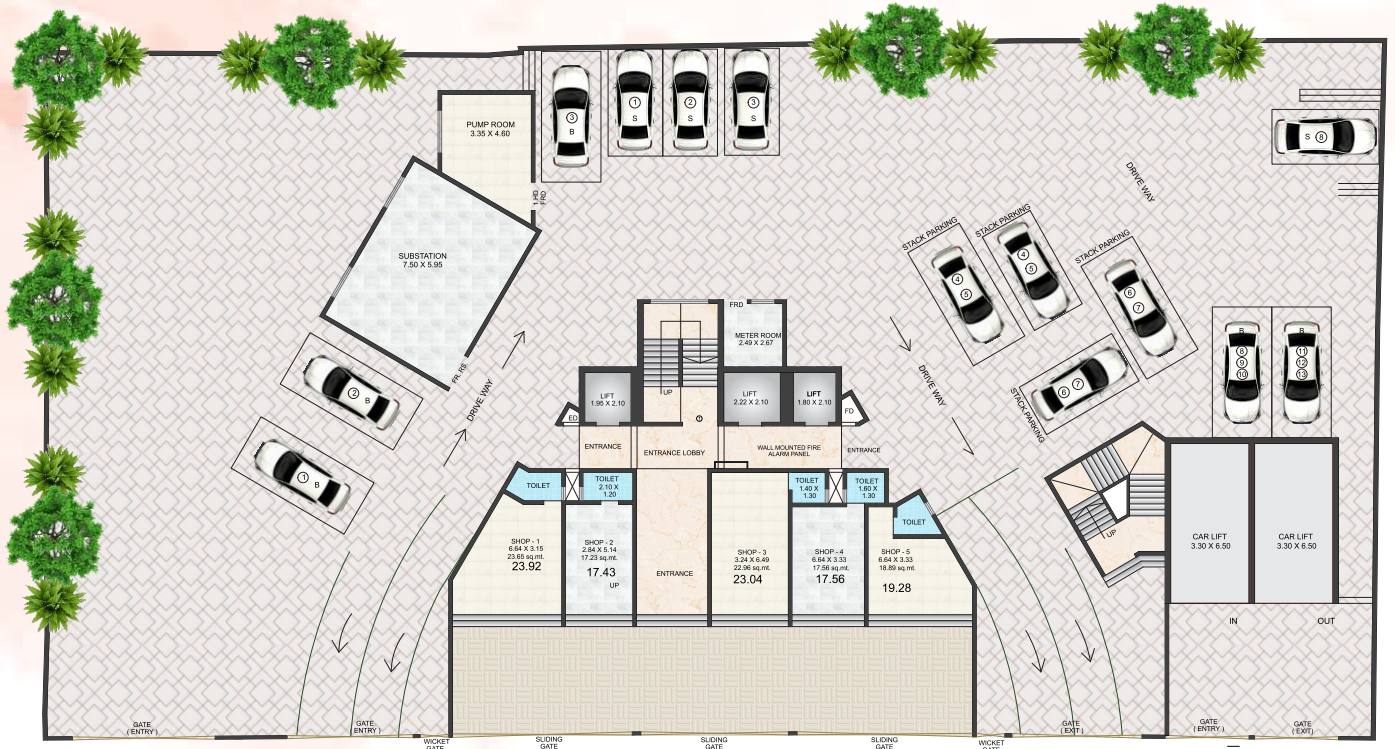
Cable & T.V. points in living room & bedrooms
Provision for Air Conditioning
Concealed copper wiring with modular switches
FTH connectivity for each home

E.V Charging Station

Special Area for Electric Vehicle Charging

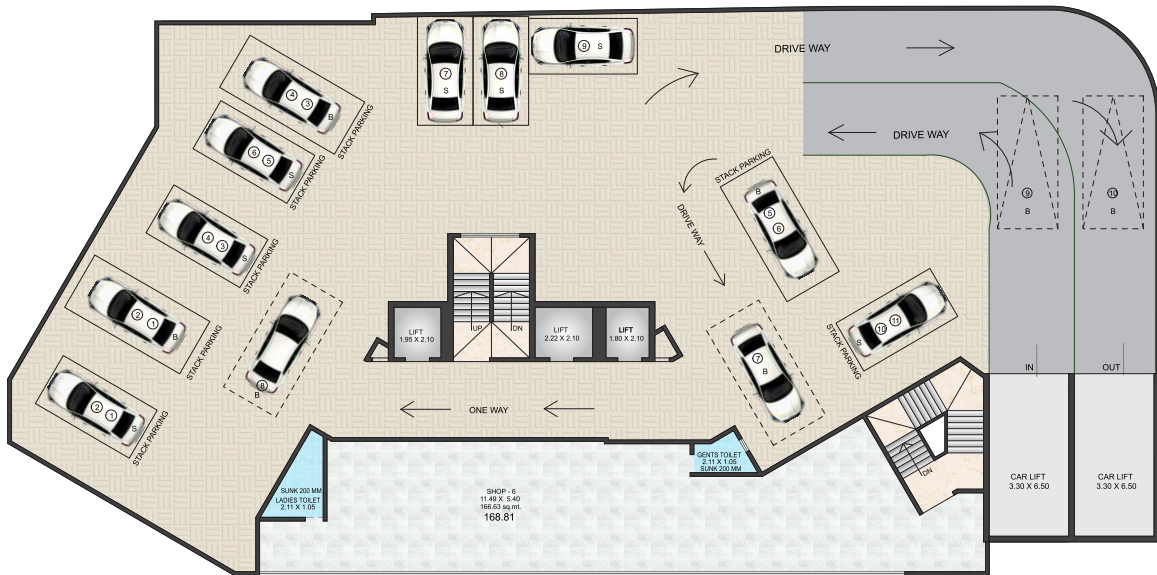




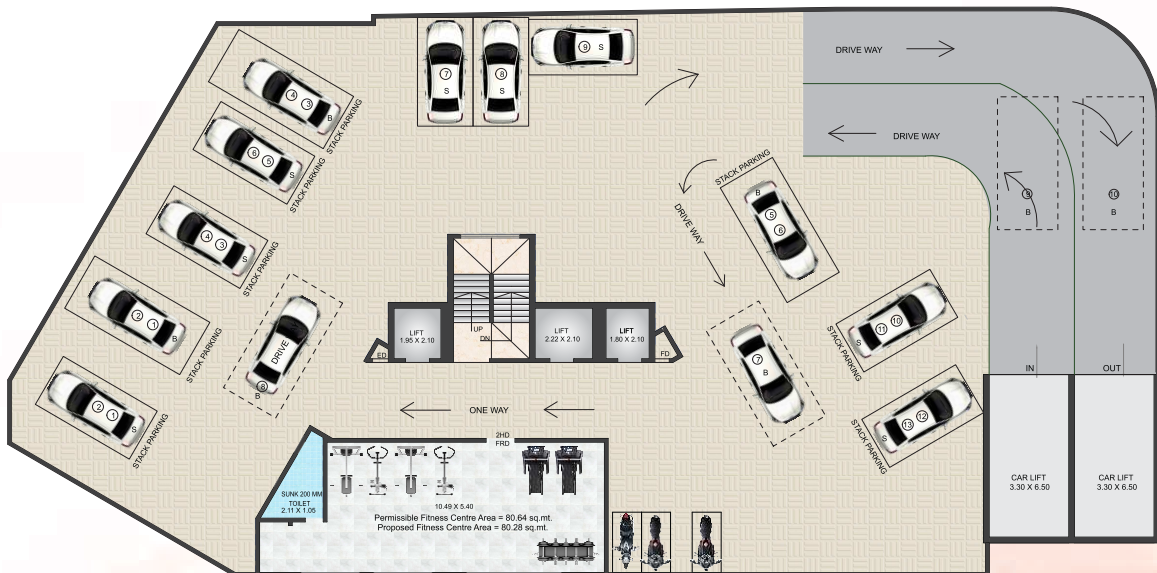


18.30 M WIDE SHIV SHRISTI ROAD

GROUND FLOOR PLAN



1 ST PODIUM FLOOR PLAN



2 ND PODIUM FLOOR PLAN



4TH FLOOR PLAN



5TH, 7TH TO 10TH FLOOR PLAN



6TH REFUGE FLOOR PLAN



11TH FLOOR PLAN



13TH REFUGE FLOOR PLAN



12ND, 14TH TO 17TH FLOOR PLAN



VEER SIDHANAK



VEER
SIDHANAK
Project by
QMSA

pentakoo's

iTSI

Alwod

T-ony Max

pentakoo's

iTSI

Alwod

T-ony Max



**1 BHK
3D VIEW**

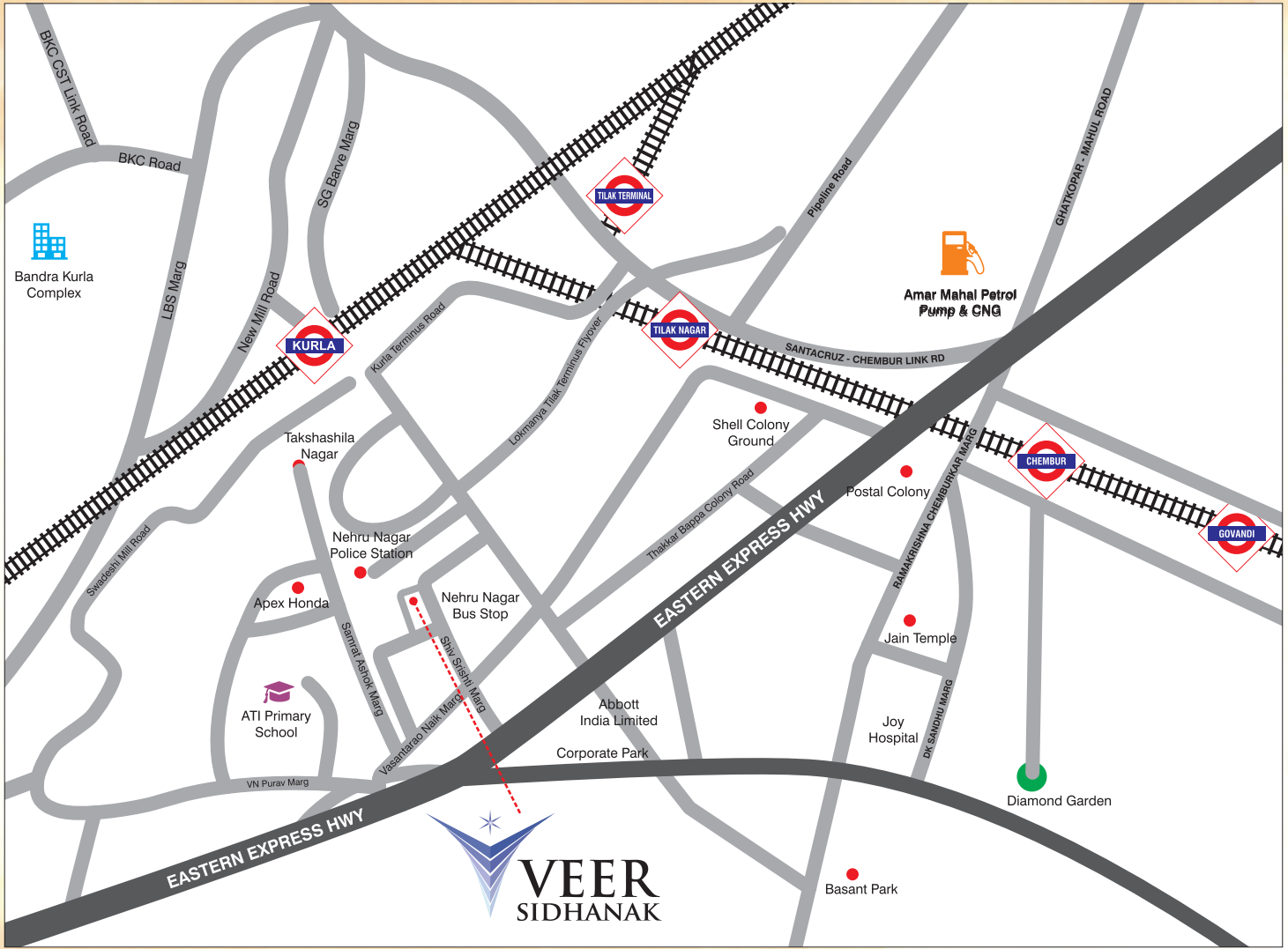


**2 BHK
3D VIEW**



Maha RERA Reg. No. P51800015156
 Details Available on <https://maharera.mahaonline.gov.in/>

Location Map



Site Address: Plot No. 11-12, Shiv-Shrushti, Kurla East, Mumbai - 400 024.

A Project by:



OM SAI GRIHA NIRMAN PVT. LTD.

Office: 42, Modi Bhavan, 19 P.R. Road, Gamdevi, Mumbai - 400007
Mob.: +91 8369886627 **Email:** omsaigrihanirman@yahoo.in

Disclaimer: All plans, drawings, amenities, facilities etc. are subject to the approval of the respective authorities and would be changed, if necessary. The discretion remains with the developer. All rendering, floor plans, pictures and maps are the artist's conceptions and not actual depictions of the building, its walls, roadways or landscaping. The brochure is for guidance and not a legal document. This brochure should also not be reproduced, copied or made available to others in any form of transmission. The Design & specifications depicted in the brochure are subject to change without prior notice. Proposed development as mentioned in the brochure is subject to approval of competent authorities.